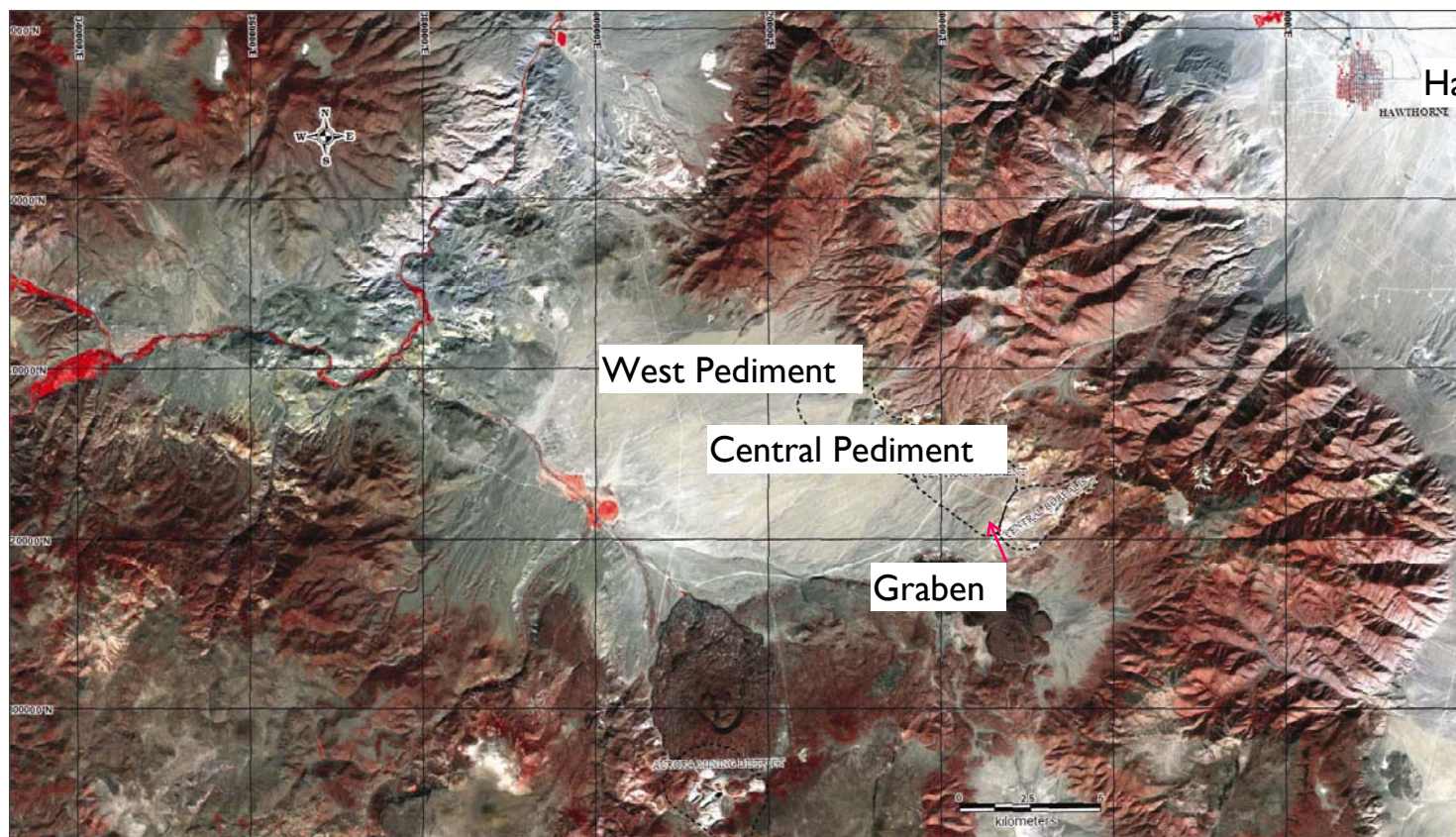




Borealis district

INFRARED VIEW



Hawthorne

West Pediment

Central Pediment

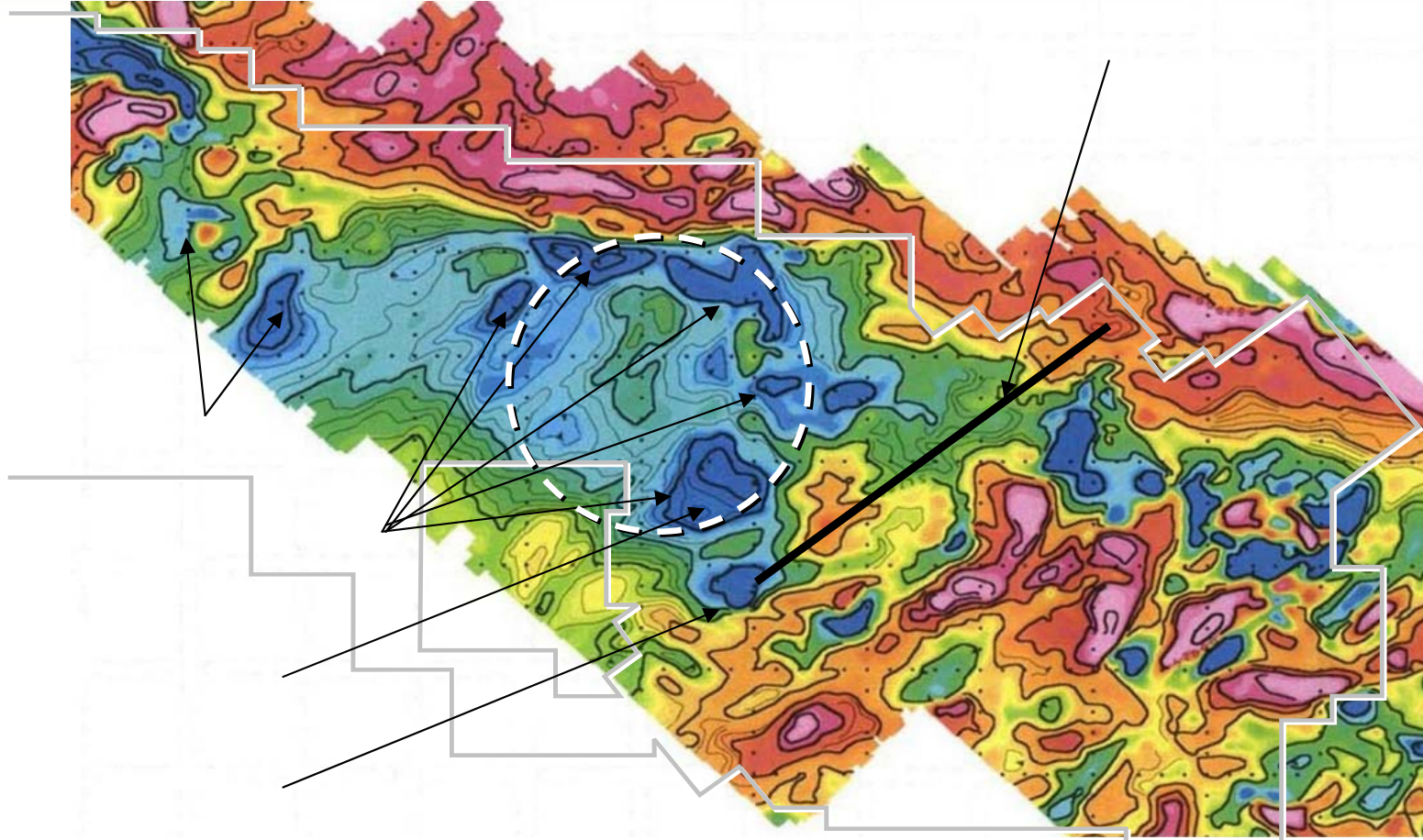
Graben



0.0km

2.0km

Borealis district aero magnetics

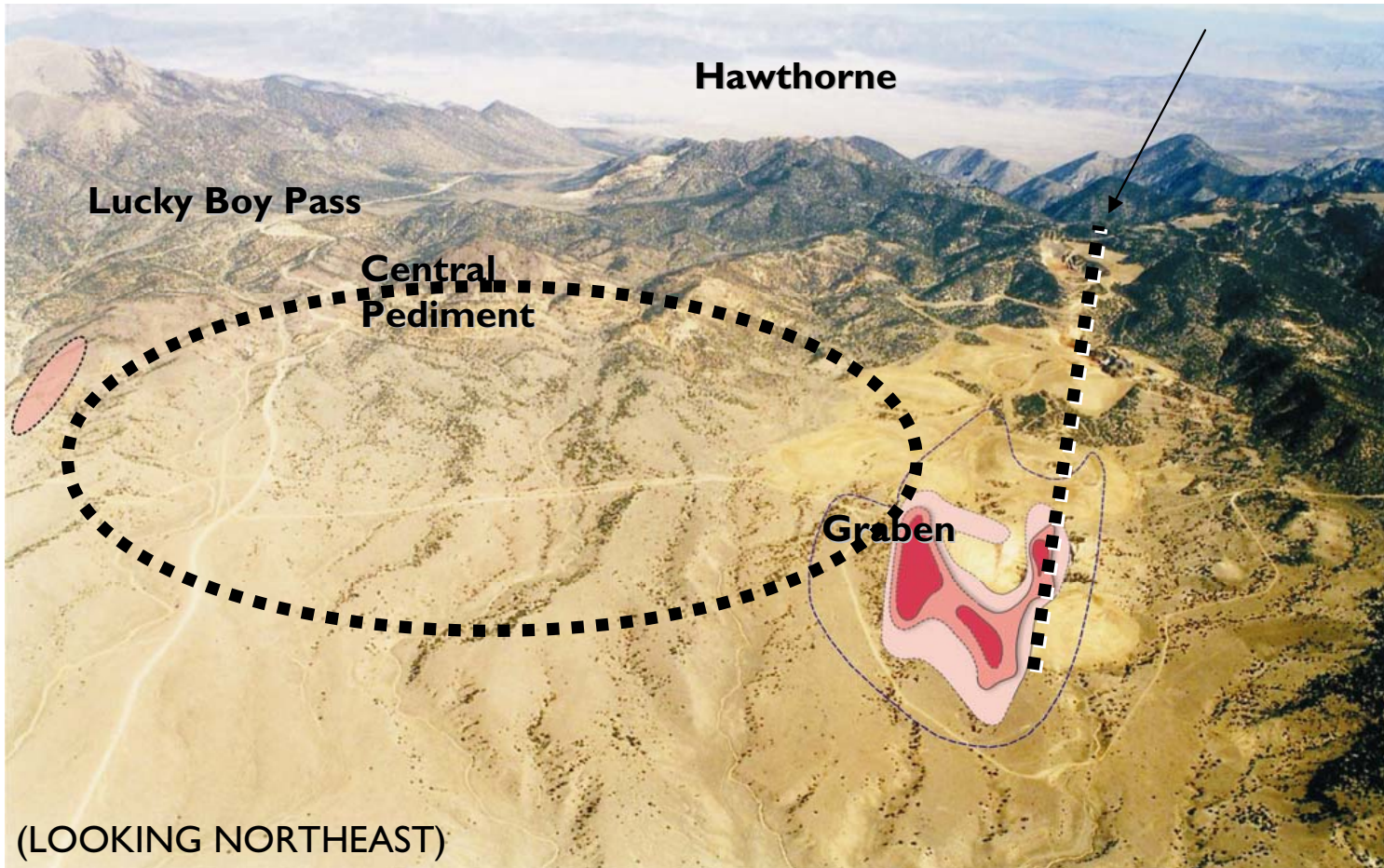


Borealis exploration terrain



AERIAL VIEW

Alignment of oxide deposits



**Western
Pediment**

**Lucky Boy
zone**

Lucky Boy Pass

**Central
Pediment**

Hawthorne

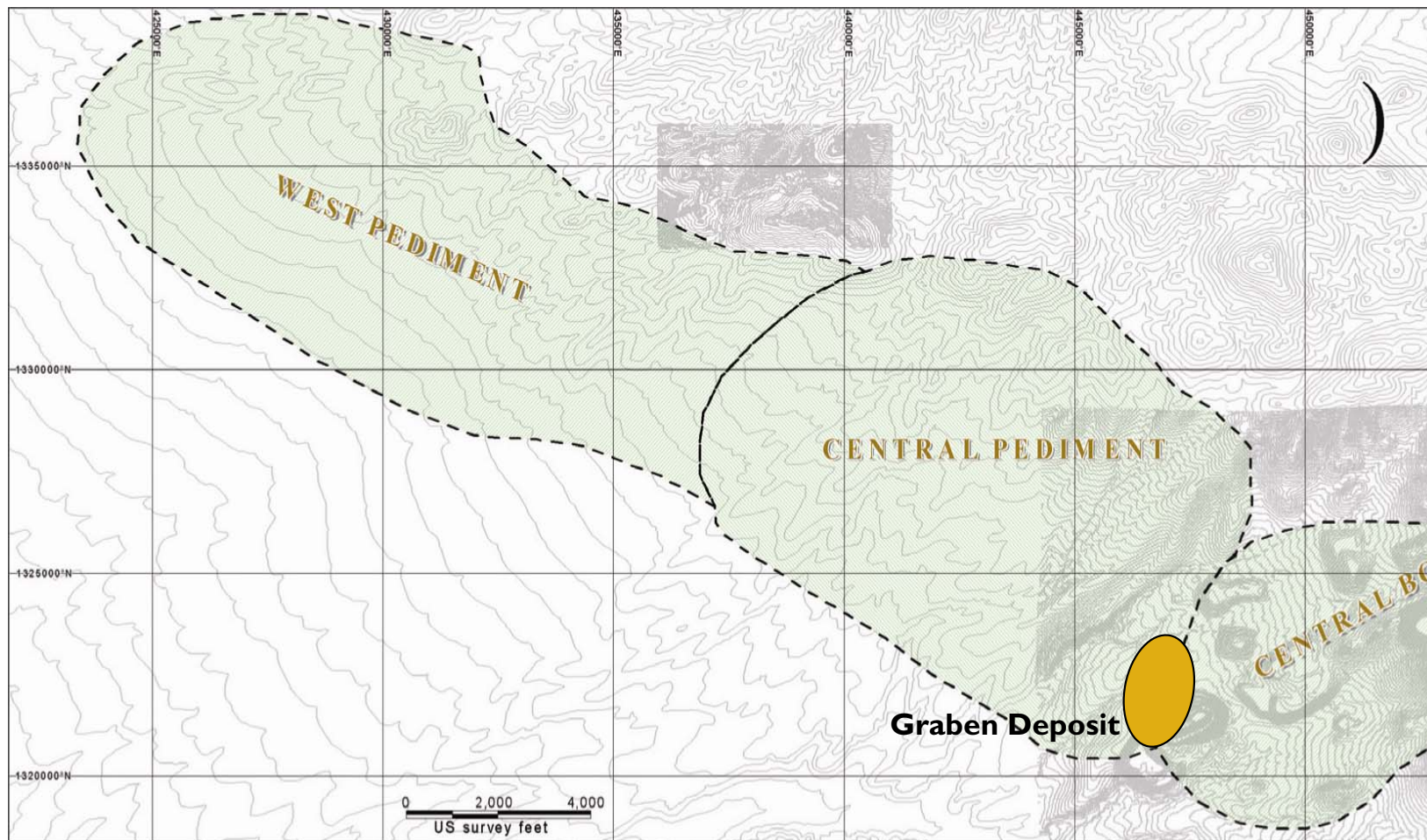
Graben

(LOOKING NORTHEAST)



Borealis district

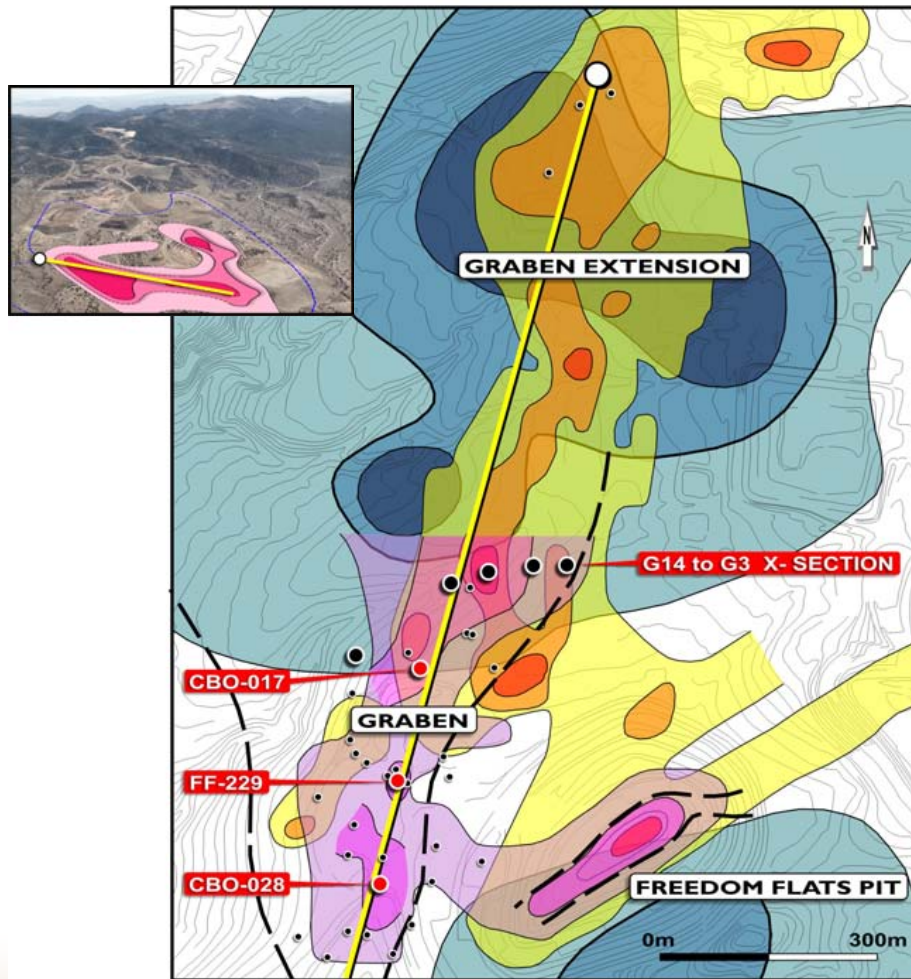
SCHEMATIC VIEW





Borealis exploration model

CENTRAL PEDIMENT: GRABEN SULPHIDE DEPOSIT



- Intense bull's-eye aeromagnetic lowsⁱ
- Strong IP and resistivity highsⁱⁱ
- Higher-grade gold trend
- Discovery drill holes

DRILL HOLE	INTERVAL	GRADE	
		OZ/T	G/T
GGC G-07	169 m	0.10	3.4
(including)	52 m	0.21	7.2
CBO-017	17 m	0.29	10.0
FF-229	76 m	0.44	15.1
(including)	26 m	1.02	35.0
CBO-028	60 m	0.23	7.9
(including)	12 m	0.74	25.4

ⁱ 1989 – Echo Bay

ⁱⁱ 1998 – Cambior